

RNDIS Driver Installation Guide



Purpose

This guide demonstrates how to set up a Remote Network Driver Interface Specification (RNDIS) driver on a Windows 10 device when a Chronos camera is recognized as a USB Serial Device at COM port instead of USB Ethernet/RNDIS Gadget.

Please note that this guide is only necessary if the user intends to connect to the Chronos camera through Ethernet over USB using the default IP Address 192.168.12.1

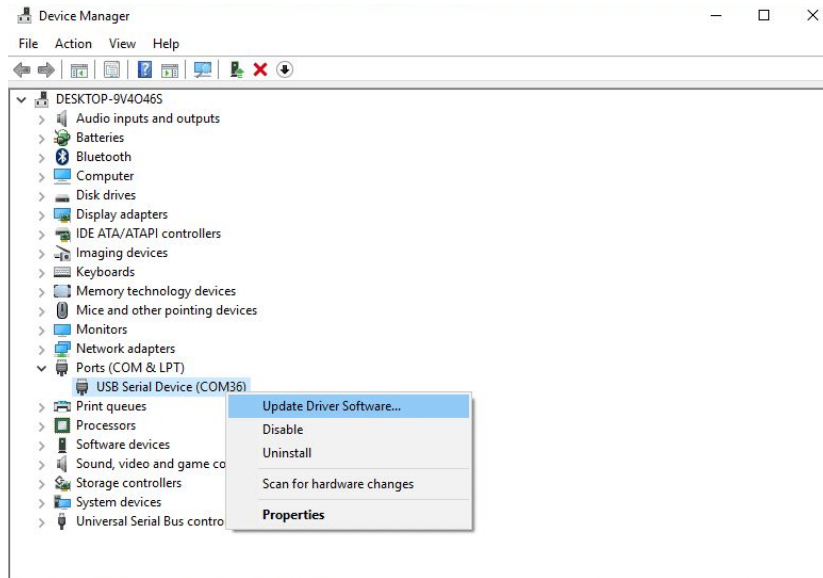
Date: 2021-01-28

Prerequisites

- Windows 10
- Chronos 1.4 or 2.1
- Software version 0.4.0 or greater
- USB-A to USB Mini for CR14-1.0- cameras, or USB-A to USB Micro for CR14-1.1 and CR21- cameras

RNDIS Setup Configuration

1. Download and unzip the [RNDIS driver.zip](#) file in a directory on your device.
2. Go to the desktop and click the Start button.
3. In the search box, type device manager.
4. Click Device Manager in the menu.
5. In the Device Manager window, look for Ports (COM & LPT).
6. Right click on the COM Port your camera is assigned to and press “Update Driver Software..”.



7. Then select “Browse my computer for driver software”.

How do you want to search for drivers?

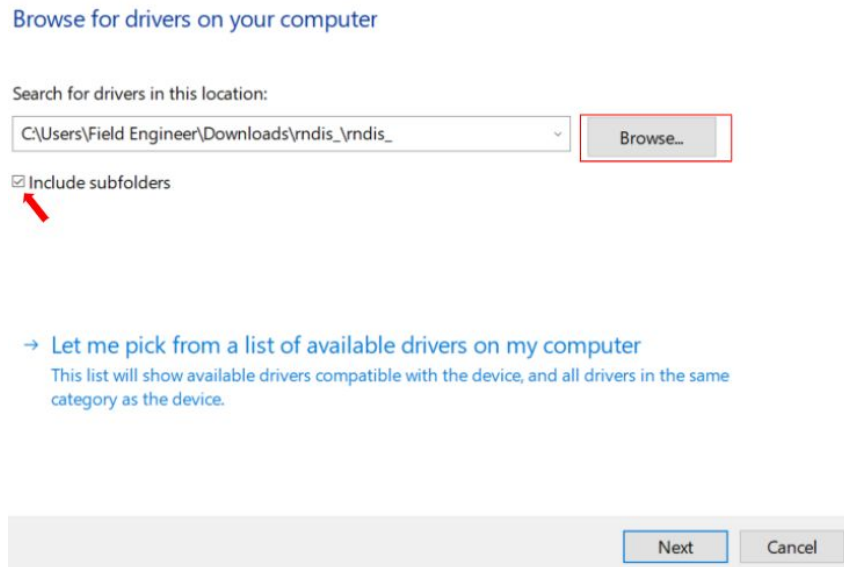
→ Search automatically for updated driver software

Windows will search your computer and the Internet for the latest driver software for your device, unless you've disabled this feature in your device installation settings.

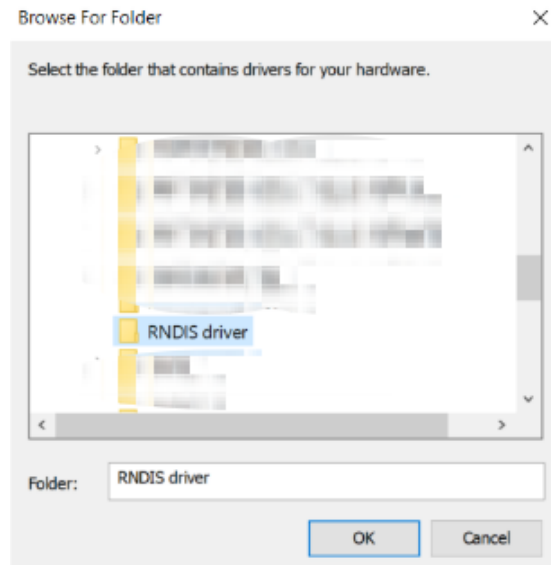
→ Browse my computer for driver software

Locate and install driver software manually.

8. Make sure the “Include subfolders” box is checked and then press the “Browse” button.

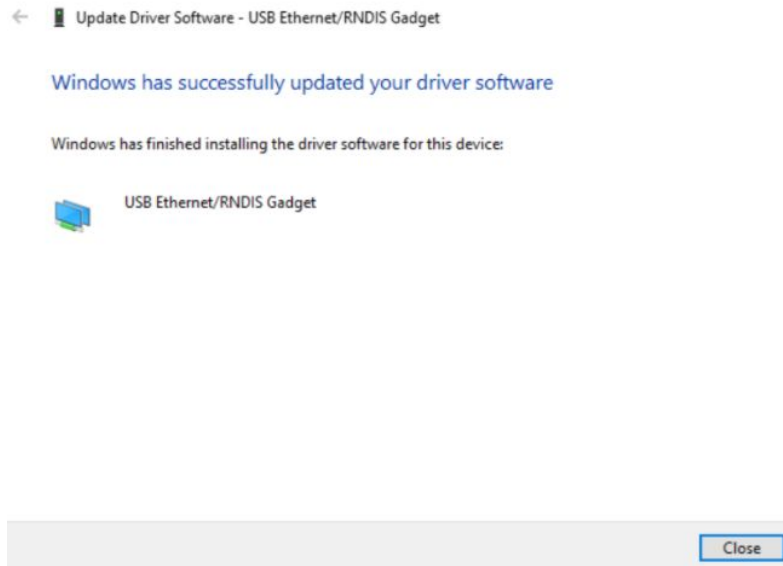


9. Select the “RNDIS Driver” and press OK.



10. RNDIS Driver is now installed. Press “Close”.

Chronos RNDIS Driver Installation Guide



11. Your device should now appear in the Device Manager under Network Adapters as a USB Ethernet/RNDIS Gadget and you can now ping 192.168.12.1 in your command prompt or control the Chronos through the web interface by searching 192.168.12.1 on your favorite web browser.

Please contact us through support@krontech.ca if you need any more information or require further assistance.